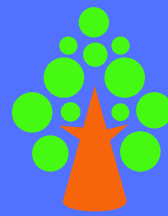


24 SEPTEMBER 2021

# NEWSLETTER

Archbishop Hutton's VC Primary School

a tree is known by its fruit



Archbishop Hutton's  
Primary School

## TEAM POINTS

Crag : 970

Hutton : 889

Senset : 757

Washington : 868

## ROBIN WOOD FUN



School has been very quiet this week because Class 4 have been away at their Robin Wood residential visit with Mr McGurk, Mrs Spencer and Miss Massaro. They have been enjoying the caves, the giant swing, climbing walls and have been spoilt with great breakfasts, lunches and dinners. We will be putting lots more photos on the school website when they get back.



WELL DONE CRAG

## IMPORTANT REMINDERS

### September

Monday 27: Class 4 swimming lessons

### October

Wednesday 6: Harvest Assembly @ 2:30pm

Thursday 7: Class 4 trip to Lake District

Week of 11: Money Week

Monday 11: New Parents Open Day @ 2pm

Thursday 14: New Parents Open Day @ 9am

Thursday 21: D.T. Invention Convention

Friday 22nd: Half Term begins

**Every Tuesday:** PE with Mr Harris.

Don't forget to bring your kit!

## SUPER LEARNERS



### Writing Superstars

**Class 1:** Bronson Pickup

**Class 2:** Edie Bowden

**Class 3:** Jorgie Bowden

**Class 4:**



### Mega Maths Heroes

**Class 1:** Rory Robinson

**Class 2:** Madeleine Spencer

**Class 3:** Connie Laurence

**Class 4:**



### Learner of the Week

**Class 1:** Millie McGrotty

**Class 2:** Amelie Fairclough

**Class 3:** Isaac Parnell

**Class 4:**

## COME AND JOIN THE PTA

The school PTA have held their first meeting of the year and have welcomed some new members. However, there is always room for more! The PTA works hard across the year, raising funds and having fun in the process. In recent years, their focus has been on our massively successful Big IT Drive, buying new computers, a server, classroom screens and laptops. Join in and help out. Everyone is welcome!

## Open Day for New Parents

School will be holding two open day events for anyone who is hoping to send their children to Archbishop Hutton's in September 2022. If you know anyone whose child will be at Reception age next year - please alert them to the dates.

Monday October 11 @ 2pm and Thursday 14th October @ 9am.





## SHOE BOX APPEAL



The School Council have decided that we will be working with Boxes of Hope - Cumbria to help with their annual Christmas Shoebox Campaign. This campaign supports underprivileged children in Romania and provides them with a Christmas gift. Despite the obstacles that Covid-19 put in the way, last year's campaign was a great success and the charity sent more than 7,606 shoeboxes to Romania.

The boxes contain educational supplies such as pens and pencils, toys (such as dolls, cars and tennis balls), sweets and hygiene items such as face cloths and soap.

Children and adults alike love to fill a shoebox - it is a simple and fun thing to do, doesn't have to cost a lot of money, and it really does make a difference to a child who has none of the basics we take for granted. Many of them have never in their lives had a gift. Many have never had a toy.

If you want to take part - ask Mr Pugh for the leaflet with more information and follow the tips to make a great box for a child.

## HARVEST ASSEMBLY

This year we will be celebrating the Harvest with an assembly on Wednesday 6th October. On the day, we will be having a collection for the Morecambe Bay Food Bank. We hope you can join us at 2:30pm for our celebration.



## LIGHT UP LANCASTER



Class 3 have enjoyed a packed week of fun and creativity with a trip to Trowbarrow. Here, they met some snakes from the Wildlife Oasis and made some nature art. Then on Thursday they were visited by artists who helped them make a huge lantern for the Light Up Lancaster festival.

## How do I take part ?

- Obtain a small or medium sized shoebox (NO BOOT BOXES PLEASE!) and wrap the lid and the box separately with bright paper. Maximum size: L30cm x W18cm x H11cm
- Fill the box for a child aged between 3 and 14 with items from the list below - a mixture of fun and practical items: We do not specify any age groups, as our experience, when distributing the boxes, has shown that it is impractical to match these up correctly. However, families tend to be large, so swapping and sharing take place.
- Complete the donation form overleaf - please consider gift aid if you are a taxpayer, as we can claim an extra 25% on your donation (£2 becomes £2.50).
- Put the form and your £2 donation - cash or cheque - in an envelope. Place **on top of** the items inside the box.
- Cut out the boy or girl label and tape it on the outside of the lid, securing the box with a stout elastic band.
- Take your box to one of our Drop-off locations NO LATER THAN 12th NOVEMBER. (The boxes travel overland to Romania and have to leave by mid Nov).



## What to put in the box...

- A selection of toys and games such as a ball, car, doll, skipping rope, yo-yo, dominoes (sturdy toys please as these children are not used to toys and have little manual dexterity).
- Sweets (use by date at least March of next year).
- Notebook, colouring book, pen, crayons, pencils, rubber, ruler, pencil sharpener.
- Hat, scarf, mittens or gloves, a pair of socks.
- Soap and a facecloth, toothbrush, toothpaste, hair brush/comb, hair accessories.

## Please don't put in...

- Food (except for sweets), medicines, aerosols, liquids (shampoo, shower gel, bubbles), glass or fragile items, sharp items (knives, scissors, needles).
- War related toys (guns, tanks, soldiers), novels.
- Playdough, plasticine, loom bands





## Covid Management Plan

The Government has made it a national priority that education and childcare settings should continue to operate as normally as possible during the COVID-19 pandemic. There is emphasis on the serious impacts of having missed education during the pandemic for young people.

The DfE's published COVID Contingency Framework states that schools should have an *Outbreak Management Plan*.

Our plan - alongside our Covid19 Management Risk Assessment is published on the school website. As we stick to Government guidance, we will do all that we can to keep school completely open. However, it may be necessary to implement these measures in the following circumstances, for example:

- To help manage a COVID-19 outbreak within the school
- If COVID-19 infection rates in the community are extremely high, and other measures have failed to reduce transmission
- As part of a package of measures responding to a 'variant of concern' (VoC)

We will only implement some, or all of the measures in this plan in response to recommendations provided by our local authority (LA), director of public health (DsPH), Public Health England (PHE) health protection team or the national government.

The rules on us dealing with single confirmed cases has changed since August and although we no longer need to inform classes or bubbles of a single case, we will alert parents of direct contacts (48 hours or less) of anyone testing positive and allow all concerned to make the decision to get a PCR test as appropriate.



**How Can We Prevent Bubbles, Isolations and Closures?** If we all work together we can make sure that Coronavirus stays out of school and everyone can remain in class, working and learning. In school, we are encouraging hand washing, keeping our germs to ourselves and telling adults if we are feeling unwell. If you have any suspicion that your child or anyone at home may have Coronavirus, please monitor them and get a test. Children without symptoms do not need to self isolate if someone at home or in their class is positive. If they do show symptoms - please get them tested as soon as possible. Let us know what is happening and we will do what we can to support you.

## What is our Vision?

**a tree is known by its fruit**

By actively promoting children's spiritual, moral, social and cultural development with a strong focus on Christian values, we fulfil our vision by:

promoting the traditional values of respectful behaviour, responsibility and forgiveness, we prepare our children for life in a global, multi-faith society.

supporting all children to become independent thinkers and confident learners, we encourage curiosity, ambition and individuality.

providing focused, engaging and inclusive teaching we equip the children to lead their own learning in a supportive and challenging environment.

## Values and Assemblies

### LEARNER OF THE WEEK

#### Applying a new skill

Using something you have just learnt to improve your learning

#### WRITING SUPERSTAR MEGA MATHS HERO



#### Our Assembly value this term is Trust

### TRUST IS...

Taking someone at their word

Relying on someone to support you

Unbreakable promises

Showing that you can be trusted

Treasuring good friends

