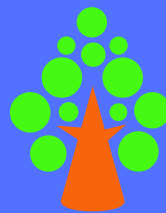


1 OCTOBER 2021

NEWSLETTER

Archbishop Hutton's VC Primary School

a tree is known by its fruit



Archbishop Hutton's
Primary School

TEAM POINTS

Crag : 767

Hutton : 614

Senset : 748

Washington 740:



WELL DONE CRAG

SUPER LEARNERS



Writing Superstars

Class 1: Dolly Lloyd

Class 2: Rupert Vereker

Class 3: Lily Roberts-Procter

Class 4: Laurence Stallard

Mega Maths Heroes

Class 1: Amelie Taylor

Class 2: Isaac Thompson

Class 3: Duncan Stallard

Class 4: Alistair Kingshott

Learner of the Week

Class 1: Talitha Raine

Class 2: Frankie Ashworth

Class 3: Micah Raine

Class 4: Ava Grimshaw



Harvest Assembly and Food Bank

This year we will be celebrating the Harvest with an assembly on Wednesday 6th October at 2:25pm. Everyone has been learning some Harvest songs in our singing sessions and it is great to hear them again after a two year break. Harvest is an important part of the year and it ties in with our school values, especially Thankfulness and Generosity. On the day, we will be having a collection for the Morecambe Bay Food Bank who we have been supporting over the last year. We hope you can join us for our celebration.

National Poetry Day 2021

Next week, it is National Poetry Day. As part of our Super Readers project we will be spending Friday writing and learning poems. We hope to share some poems in Celebration Assembly at the end of the day. We hope you will join us for this special assembly, when we will launch our Autumn Term Super Readers Challenge. Assembly will start at 2:25pm.



WE ARE ALL 
SUPER READERS

IMPORTANT REMINDERS

October

Monday 4 : Class 4 swimming lessons

Wednesday 6: Harvest Assembly @ 2:25pm

Thursday 7: Class 4 trip to Lake District

Friday 8: National Poetry Day Assembly

Week of 11: Money Week

Monday 11: New Parents Open Day @ 2pm

Thursday 14: New Parents Open Day @ 9am

Thursday 21: D.T. Invention Convention

Friday 22nd: Half Term begins

November

5-6: Light Up Lancaster lantern event

22-26: Science Week

Friday 26: Dress like a Scientist Day

W/C 29: Assessment week

December

Wednesday 1: Class 1 Parents Evening

Friday 3: Bring a bottle own clothes day

Monday 6: Class 3 go to Panto

Tuesday 7: KS1 Nativity (2pm and 6:30pm)

Thursday 9: Class 1 and 2 go to Panto

Friday 10: Christmas Fair

Wednesday 15: Class 4 go to Panto

Thursday 16: Christmas Dinner and Jumper Day

Friday 17: Break Up for Christmas

Open Day for New Parents

School will be holding two open day events for anyone who is hoping to send their children to Archbishop Hutton's in September 2022. If you know anyone whose child will be at Reception age next year - please alert them to the dates.

Monday October 11 @ 2pm and
Thursday 14th October @ 9am.



SHOE BOX APPEAL



The School Council have decided that we will be working with Boxes of Hope - Cumbria to help with their annual Christmas Shoebox Campaign. This campaign supports underprivileged children in Romania and provides them with a Christmas gift. Despite the obstacles that Covid-19 put in the way, last year's campaign was a great success and the charity sent more than 7,606 shoeboxes to Romania.

The boxes contain educational supplies such as pens and pencils, toys (such as dolls, cars and tennis balls), sweets and hygiene items such as face cloths and soap.

Children and adults alike love to fill a shoebox - it is a simple and fun thing to do, doesn't have to cost a lot of money, and it really does make a difference to a child who has none of the basics we take for granted. Many of them have never in their lives had a gift. Many have never had a toy.

If you want to take part - ask Mr Pugh for the leaflet with more information and follow the tips to make a great box for a child.

Why not join the PTA?



The school PTA have held their first meeting of the year and have welcomed some new members. However, there is always room for more! The PTA works hard across the year, raising funds and having fun in the process. In recent years, their focus has been on our massively successful Big IT Drive, buying new computers, a server, classroom screens and laptops.

This term, we are planning for the Christmas Fair on December 10th. There is lots to do and we'd love it if you could find the time to join in and help out. Everyone is welcome!

How do I take part ?

- Obtain a small or medium sized shoebox (NO BOOT BOXES PLEASE!) and wrap the lid and the box separately with bright paper. Maximum size: L30cm x W18cm x H11cm
- Fill the box for a child aged between 3 and 14 with items from the list below - a mixture of fun and practical items: We do not specify any age groups, as our experience, when distributing the boxes, has shown that it is impractical to match these up correctly. However, families tend to be large, so swapping and sharing take place.
- Complete the donation form overleaf - please consider gift aid if you are a taxpayer, as we can claim an extra 25% on your donation (£2 becomes £2.50).
- Put the form and your £2 donation - cash or cheque - in an envelope. Place on top of the items inside the box.
- Cut out the boy or girl label and tape it on the outside of the lid, securing the box with a stout elastic band.
- Take your box to one of our Drop-off locations NO LATER THAN 12th NOVEMBER. (The boxes travel overland to Romania and have to leave by mid Nov).



What to put in the box...

- A selection of toys and games such as a ball, car, doll, skipping rope, yo-yo, dominoes (sturdy toys please as these children are not used to toys and have little manual dexterity).
- Sweets (use by date at least March of next year).
- Notebook, colouring book, pen, crayons, pencils, rubber, ruler, pencil sharpener.
- Hat, scarf, mittens or gloves, a pair of socks.
- Soap and a facecloth, toothbrush, toothpaste, hair brush/comb, hair accessories.

Please don't put in...

- Food (except for sweets), medicines, aerosols, liquids (shampoo, shower gel, bubbles), glass or fragile items, sharp items (knives, scissors, needles).
- War related toys (guns, tanks, soldiers), novels.
- Playdough, plasticine, loom bands





Covid Management Plan

The Government has made it a national priority that education and childcare settings should continue to operate as normally as possible during the COVID-19 pandemic. There is emphasis on the serious impacts of having missed education during the pandemic for young people.

The DfE's published COVID Contingency Framework states that schools should have an *Outbreak Management Plan*.

Our plan - alongside our Covid19 Management Risk Assessment is published on the school website. As we stick to Government guidance, we will do all that we can to keep school completely open. However, it may be necessary to implement these measures in the following circumstances, for example:

- To help manage a COVID-19 outbreak within the school
- If COVID-19 infection rates in the community are extremely high, and other measures have failed to reduce transmission
- As part of a package of measures responding to a 'variant of concern' (VoC)

We will only implement some, or all of the measures in this plan in response to recommendations provided by our local authority (LA), director of public health (DsPH), Public Health England (PHE) health protection team or the national government.

The rules on us dealing with single confirmed cases has changed since August and although we no longer need to inform classes or bubbles of a single case, we will alert parents of direct contacts (48 hours or less) of anyone testing positive and allow all concerned to make the decision to get a PCR test as appropriate.



How Can We Prevent Bubbles, Isolations and Closures? If we all work together we can make sure that Coronavirus stays out of school and everyone can remain in class, working and learning. In school, we are encouraging hand washing, keeping our germs to ourselves and telling adults if we are feeling unwell. If you have any suspicion that your child or anyone at home may have Coronavirus, please monitor them and get a test. Children without symptoms do not need to self isolate if someone at home or in their class is positive. If they do show symptoms - please get them tested as soon as possible. Let us know what is happening and we will do what we can to support you.

What is our Vision? a tree is known by its fruit

By actively promoting children's spiritual, moral, social and cultural development with a strong focus on Christian values, we fulfil our vision by:

promoting the traditional values of respectful behaviour, responsibility and forgiveness, we prepare our children for life in a global, multi-faith society.

supporting all children to become independent thinkers and confident learners, we encourage curiosity, ambition and individuality.

providing focused, engaging and inclusive teaching we equip the children to lead their own learning in a supportive and challenging environment.

Values and Assemblies

LEARNER OF THE WEEK

Taking special care over the presentation of all of my work

**WRITING SUPERSTAR
MEGA MATHS HERO**



Our Assembly value this term is Trust

TRUST IS...

- Taking someone at their word
- Relying on someone to support you
- Unbreakable promises
- Showing that you can be trusted
- Treasuring good friends

