



Archbishop Hutton's
Primary School

NEWSLETTER

22/05/20

OUR PLAN for the phased return to school from June 1st

- The government will make an announcement on Thursday 28th May to confirm whether primary schools WILL OR WILL NOT re-open from Monday 1st June
- We can only share our plan for re-opening with you at this point, **we cannot confirm** when each phase of our plan will start until the government have made this announcement
- On Monday 1st June, all staff will be in school for training about the phased return risk assessment and protocols to ensure we are meeting government guidelines and keeping your child safe
- Phase 1 from Tuesday 2nd June, will be opening up key worker provision to more families. Key Worker families will receive an email on Monday 25th May to confirm uptake of this offer. Feedback from the Parent Survey indicates up to 20 key worker children are likely to be in school. These children would be divided in to two separate groups working with two adults – a teacher and a teaching assistant – in two separate classrooms. Teachers will be covering the same learning in English and Maths as provided for children learning at home
- If this works successfully, Phase 2 would be to invite Reception and Year 1 children back in to school. Again these children would work in two separate groups (Reception and Year 1 working separately) working with two adults – a teacher and a teaching assistant – in two separate classrooms. Phase 2 may happen from Monday 8th June
- Phase 3 would be to invite Year 6 back to school in July in order to complete some support for preparing to go to secondary school and celebrating their time at our school
- We will review how effectively each phase is working towards the end of each week by getting feedback from the children, parents and staff involved. This review will help us in making any changes to our practice and deciding when to start the next phase
- From 1st June to 17th July, when this academic year finishes, teachers will continue to provide weekly home learning as well as feedback to pupils about their home learning in the Pupil Area. Teachers will also continue to be available to parents for direct contact using their personal email addresses. Teachers will prioritise feedback to children and communication with parents of children who continue to learn at home

- Given the current DfE guidelines, it will not be possible for any primary school to have all its children in school at the same time. Working with children in groups of 15 means there will not be enough staff nor enough space to manage this
- In order to prepare for this phased return, we have employed a specialist Health & Safety Consultant to help us complete a personalised risk assessment. On Wednesday, Miss. Watson and Mr. Pugh spent 2 hours walking round school with the Health & Safety Consultant discussing areas of concern and solutions. The Health & Safety Consultant will continue to provide us with advice and support until the end of December. Parents will be sent further information next week when the risk assessment has been finalised
- Our plan, just like any other school, depends on staff being fit and able to work
- **On Friday 29th May, we will be in touch with all parents to confirm what will be happening from Monday 1st June**
- This is a complex and tricky situation for all involved, however we will continue to do our best to keep parents informed and up-to-date

Keeping in touch

Keeping in touch throughout the next few weeks is going to be more important than ever.
 As you already know, **our current text service will end on 31st May.**
From 1st June all contact will be via email and alerts on the School Spider app.
 Emails will be checked daily during the week.
 Please do not phone before Tuesday 2nd June as the office will not be consistently staffed.
 We will confirm telephone access when we know the phased return is starting.



THANK YOU to all those parents who completed the surveys both about the phased return to school and I.T.
 We have used feedback from the phased return survey to inform our plan. We appreciate and respect all your comments and recognise that as parents you have difficult decisions to make about your child returning to school.
 We will be in contact with some parents about improving their child's I.T. access in the home, we will prioritise those children who will not be returning to school in June.



Why do parents need to download the School Spider app?

Why parents should use the School Spider app:

- keep up to date with recent calendar, news and gallery posts
- to receive smart phone messages and emails from school
- to complete surveys and forms about home learning, school visits etc.
- to book Parent Teacher Meeting appointments

How do parents access the School Spider app:

- Download the free app from Google Play store or Apple App store
- Use the drop down and select Archbishop Hutton's Primary School
- You can then see recent news, gallery, calendar and blog posts
- Next you will need to login to receive any communication related to your child
- You have already received your parent login from school so check your texts to find this. When you cannot find your login send Mrs. Robinson a text asking for your login
- When you have logged in, you do not need to do anything at all. You will receive an email and an app notification to tell you when you have been sent new information
- After that, everything is self-explanatory
- Further School Spider app information can be found on 08/05/20 BLOG ON www.archbishophuttons.lancs.sch.uk to find out how to load the app. This includes a YouTube parent tutorial.

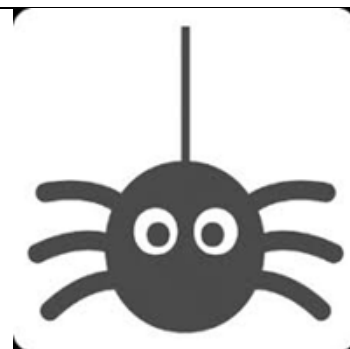
What next?

- From 1st June, we will no longer be using the Teacher2Parent text service. Home school contact will be via the School Spider app linked to the school website

Our next step for making the most of our School Spider app, will be setting up online payments for school dinners, trips and music lessons.

**Need help with downloading the app?
Please contact our chief app guru, Mrs. Robinson!**

**SO MAKE SURE YOU HAVE
SET UP THE SCHOOL
SPIDER APP
ON YOUR PHONE!**



Applying for free school meals

Have you recently become eligible for universal credit due to changing employment circumstances? This may mean that your child/children are also eligible for free school meals. When you apply for universal credit at www.gov.uk/universal-credit remember to check whether this includes eligibility for free school meals. If your children are entitled to free school meals, let us know by text or email. The government have just introduced a system of free school meal vouchers for parents to spend in supermarkets while schools are closed. As soon as we know your children are eligible, we can organise these vouchers.

Home Learning Reminder for Parents/Carers:

- Home learning for each week will be available from Friday - this gives parents time to print off any information their child needs ready to get going first thing on Monday morning
- ALL children will need a printed copy of the weekly guide created by the teachers - this tells the child what they should do every day
- ALL children should record answers to questions and activities in the exercise book provided. Spare exercise books are available from the school entrance porch during school opening hours
- For children who have on-going access to a device for their home learning the only document that should be printed out is the weekly guide. There is no need to print out worksheets for them to refer to as they have this information on screen
- For children who are not working from a device, then worksheets will need printing out for them to use
- Teachers have included their school email addresses at the top of next week's Home Learning Guide. This will enable parents to contact their child's teacher directly with queries or concerns relating to home learning.
- Home Learning for the week beginning 1st June will be available from Friday 29th May

THERE WILL BE NO HOME LEARNING DURING HALF-TERM

(NEXT WEEK STARTING 26th MAY)

ENJOY A WEEK OFF!!



“All right,” said the Gruffalo, bursting with laughter.
“You go ahead and I’ll follow two metres after.”